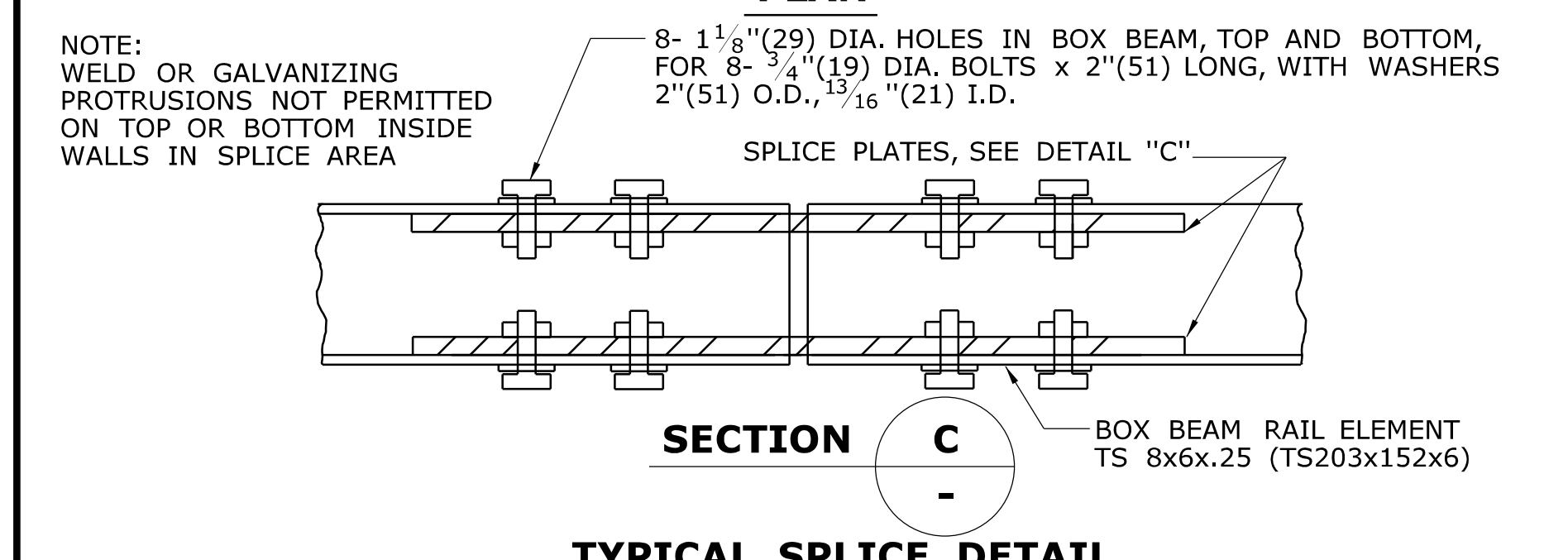
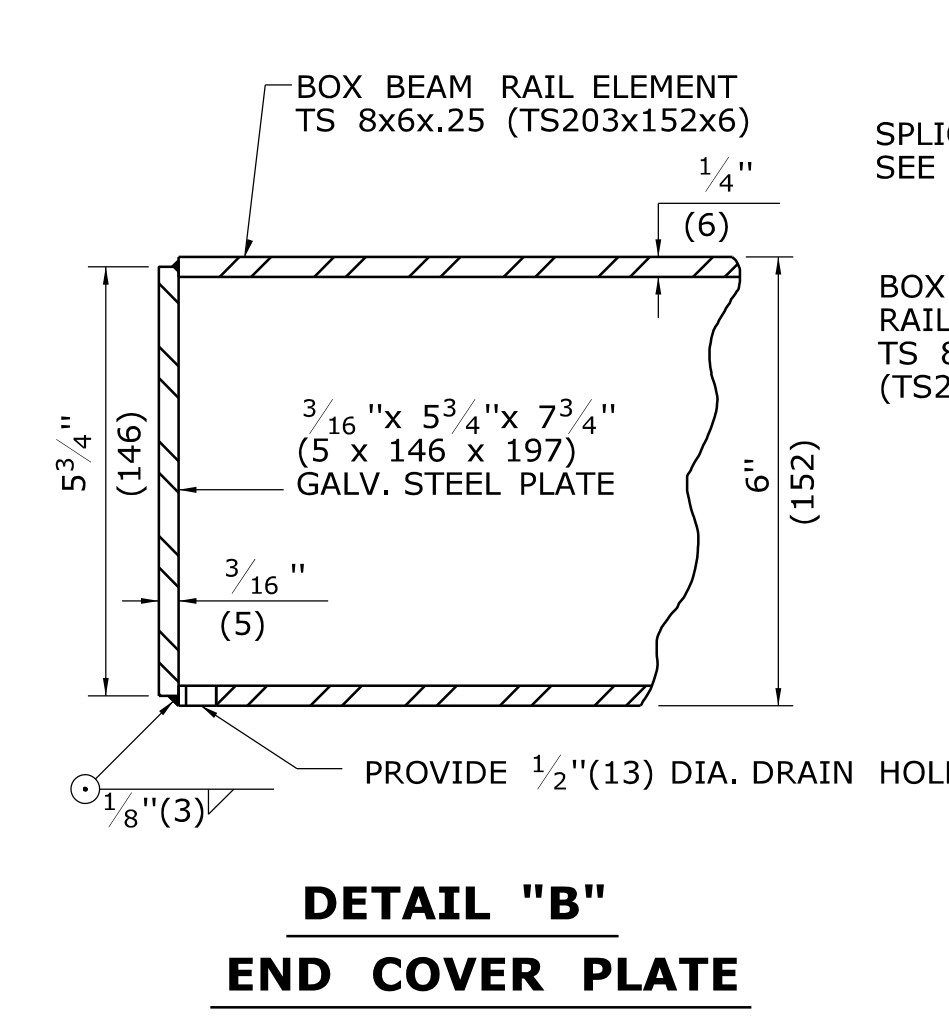
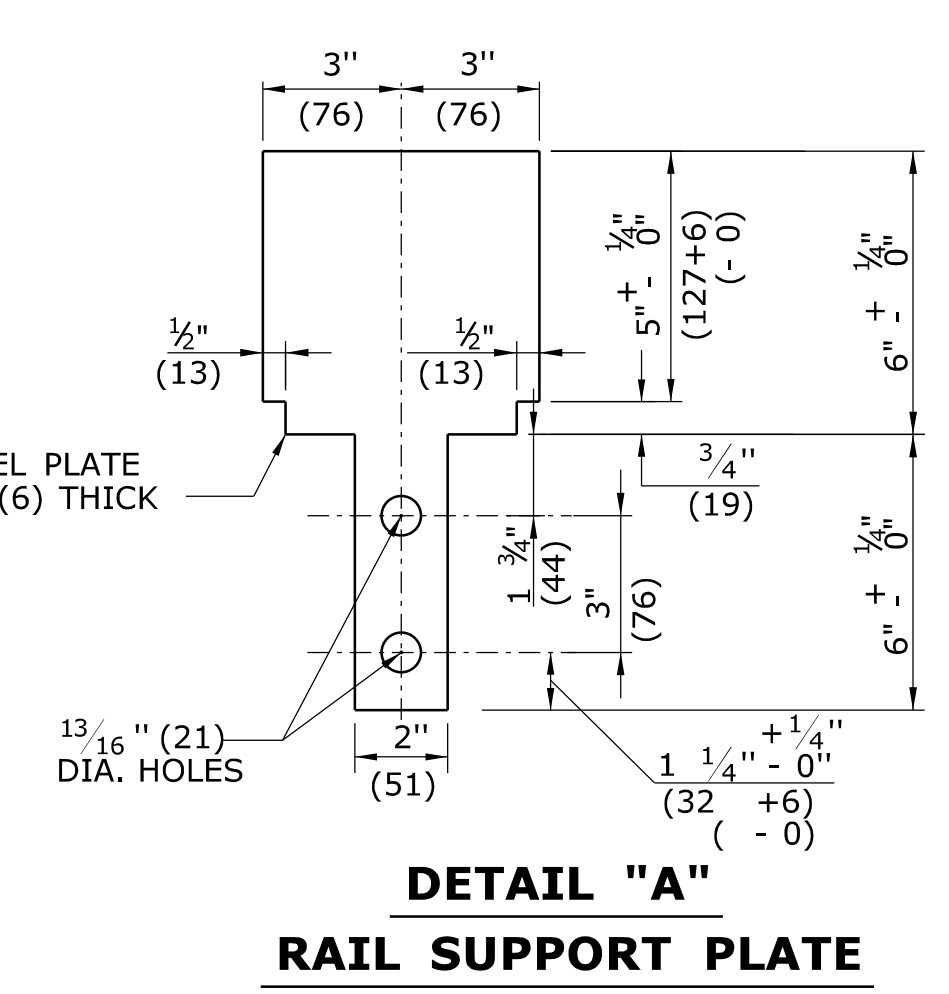
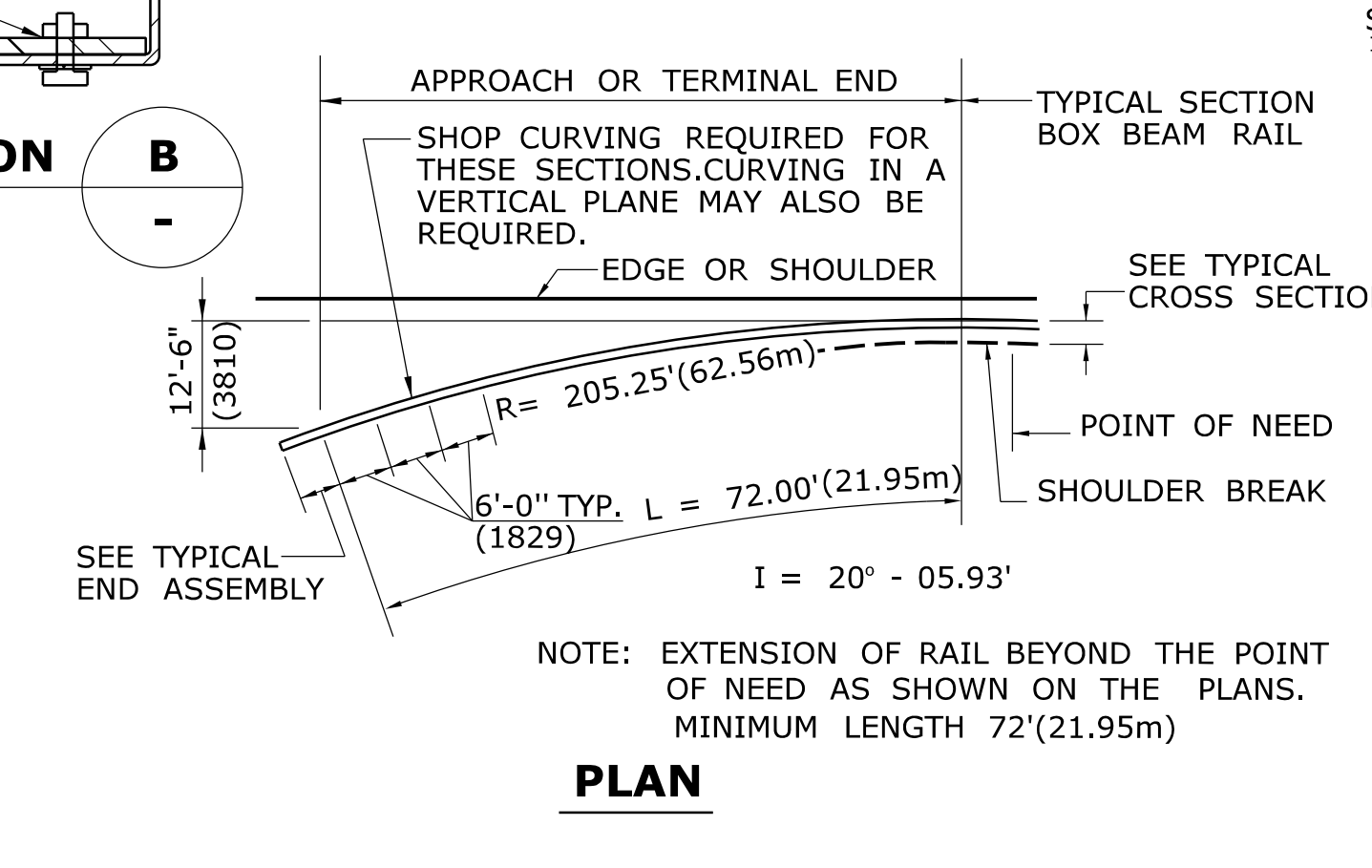
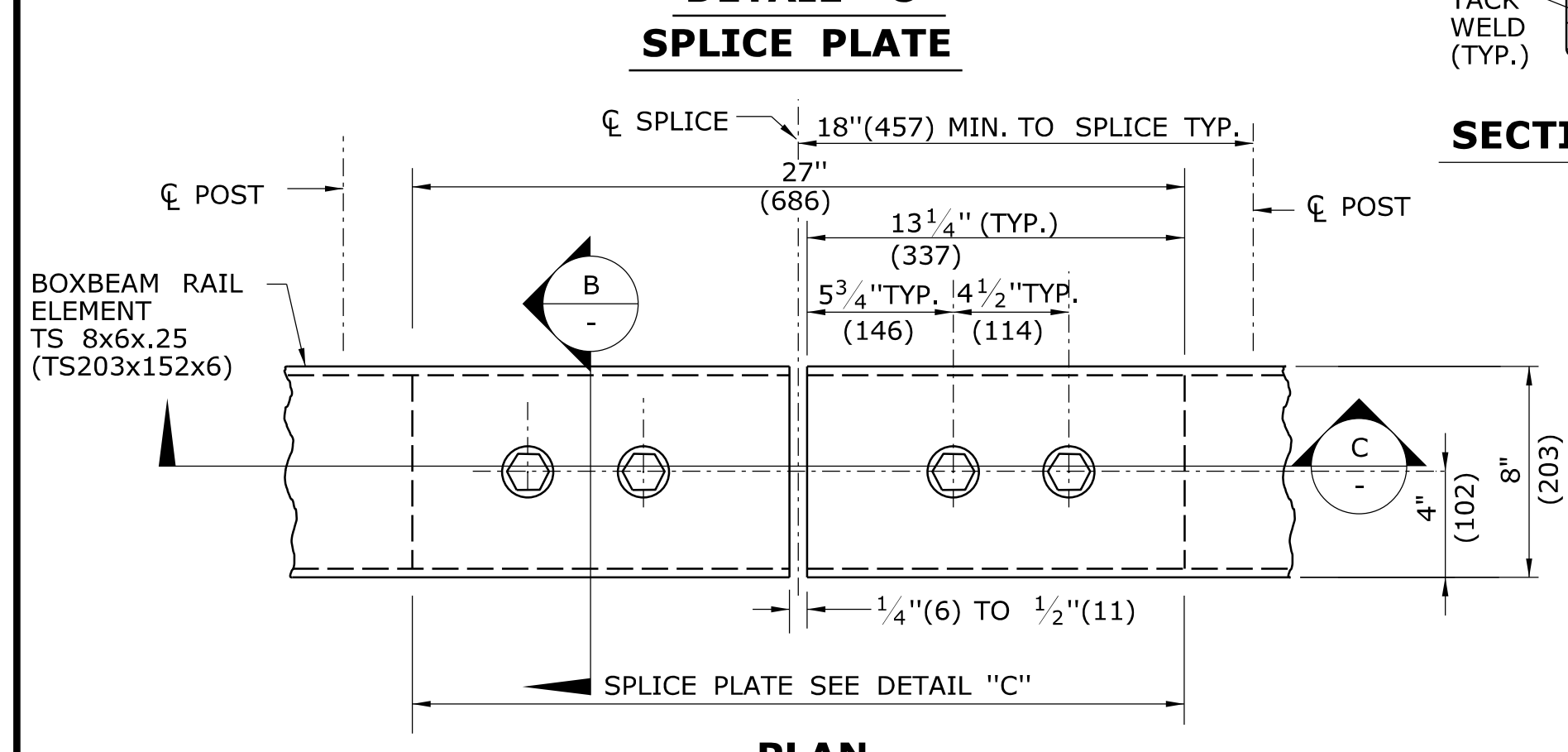
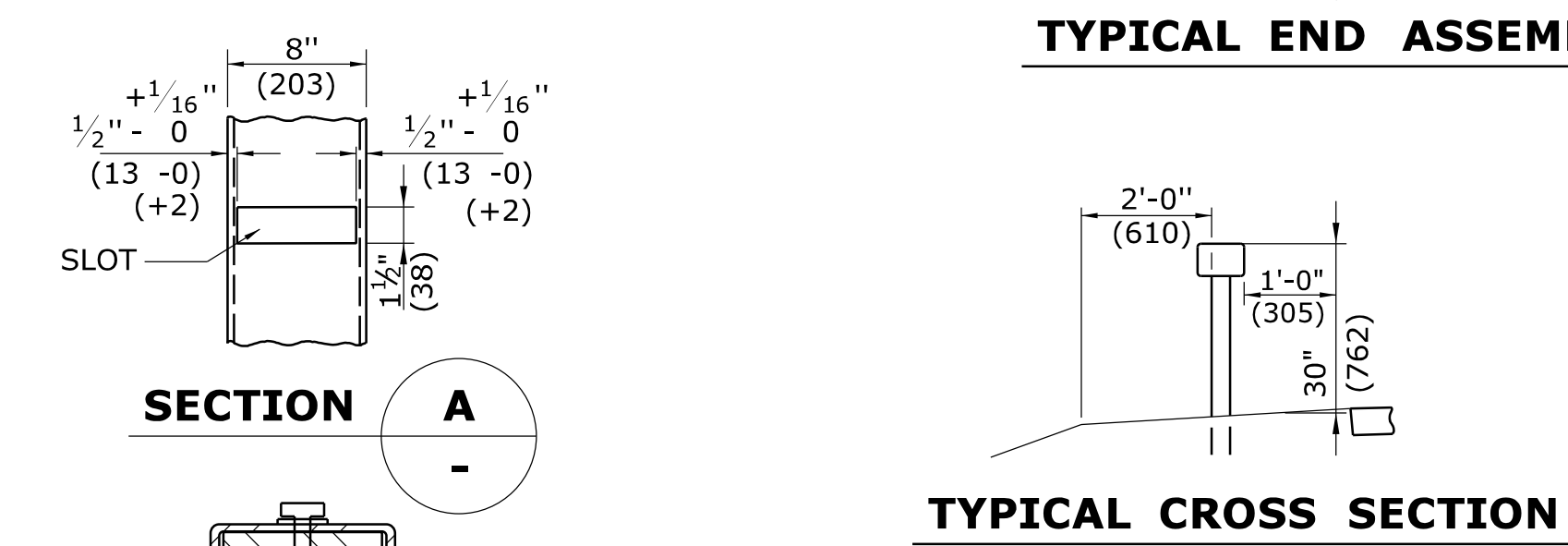
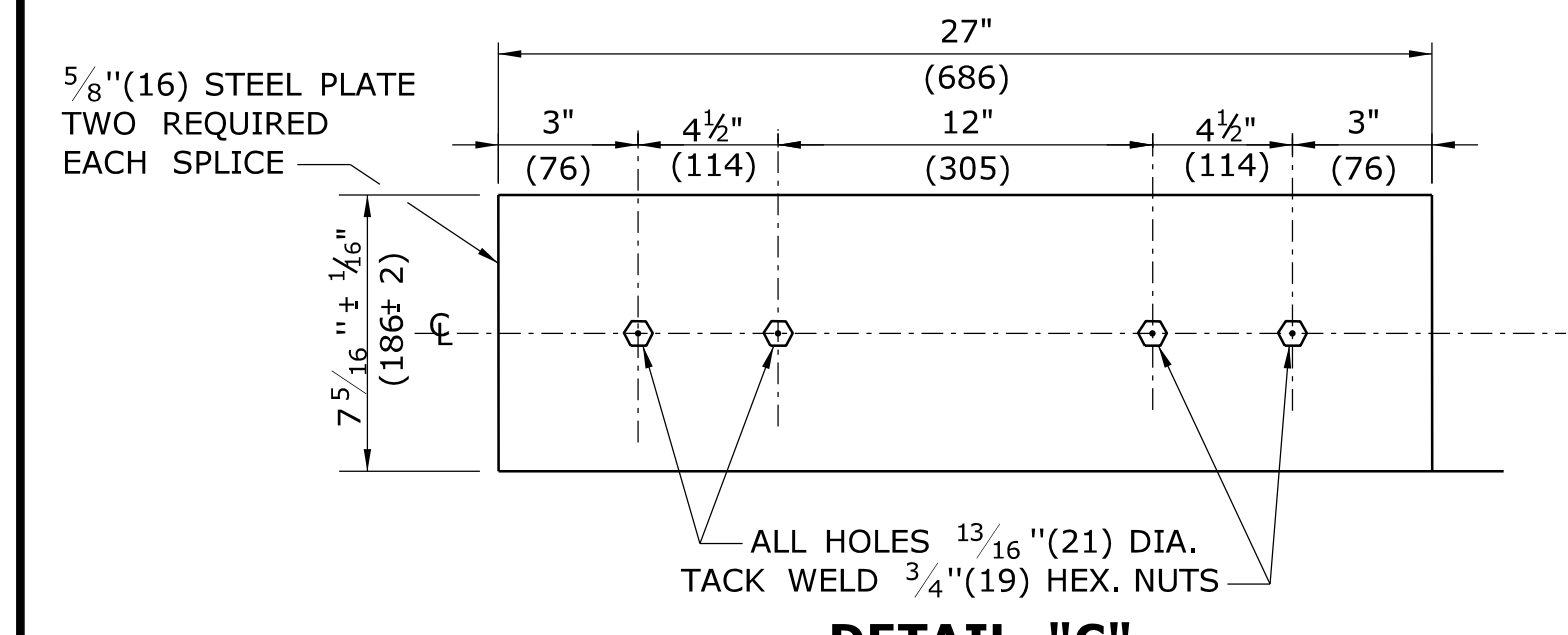
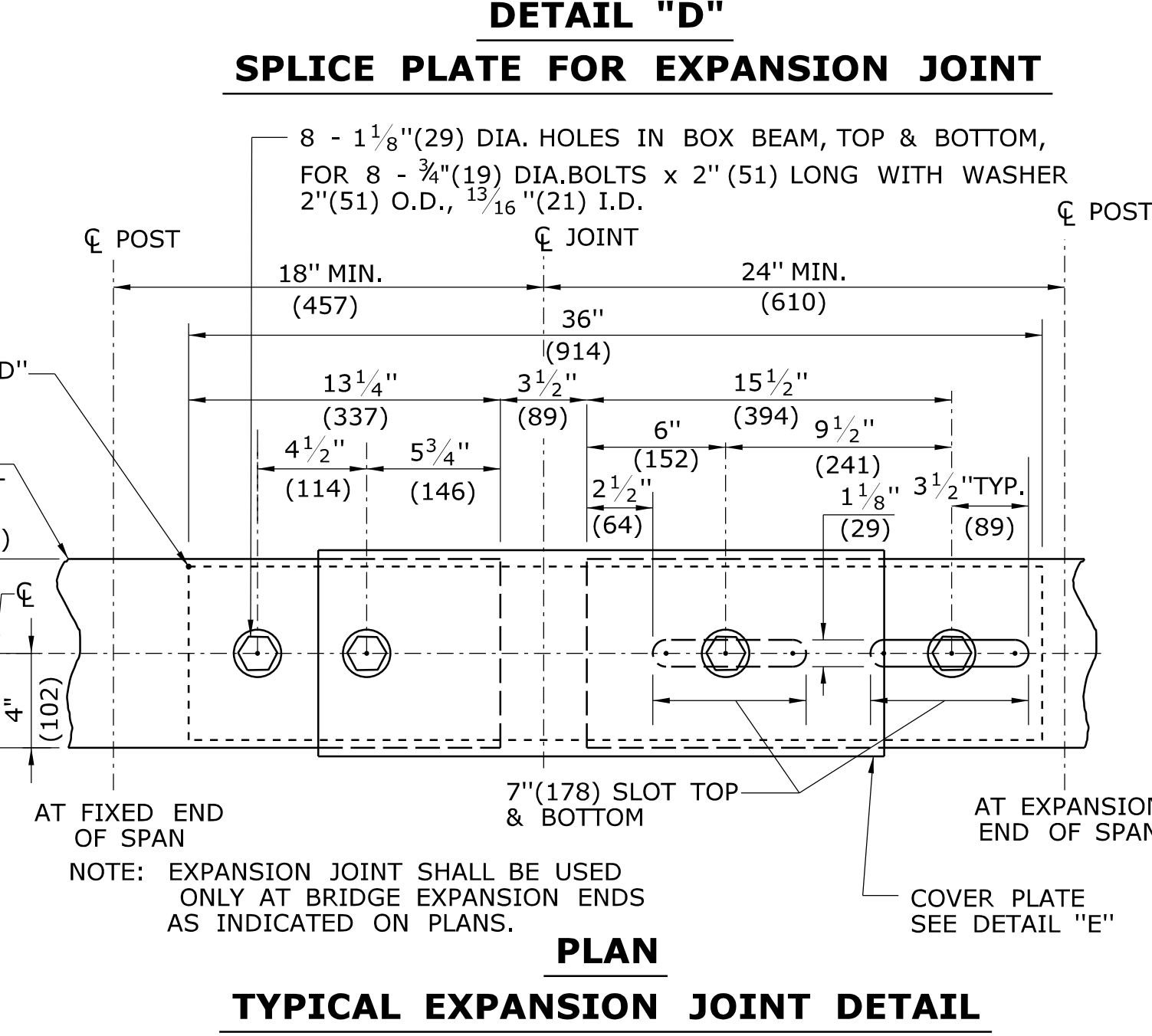
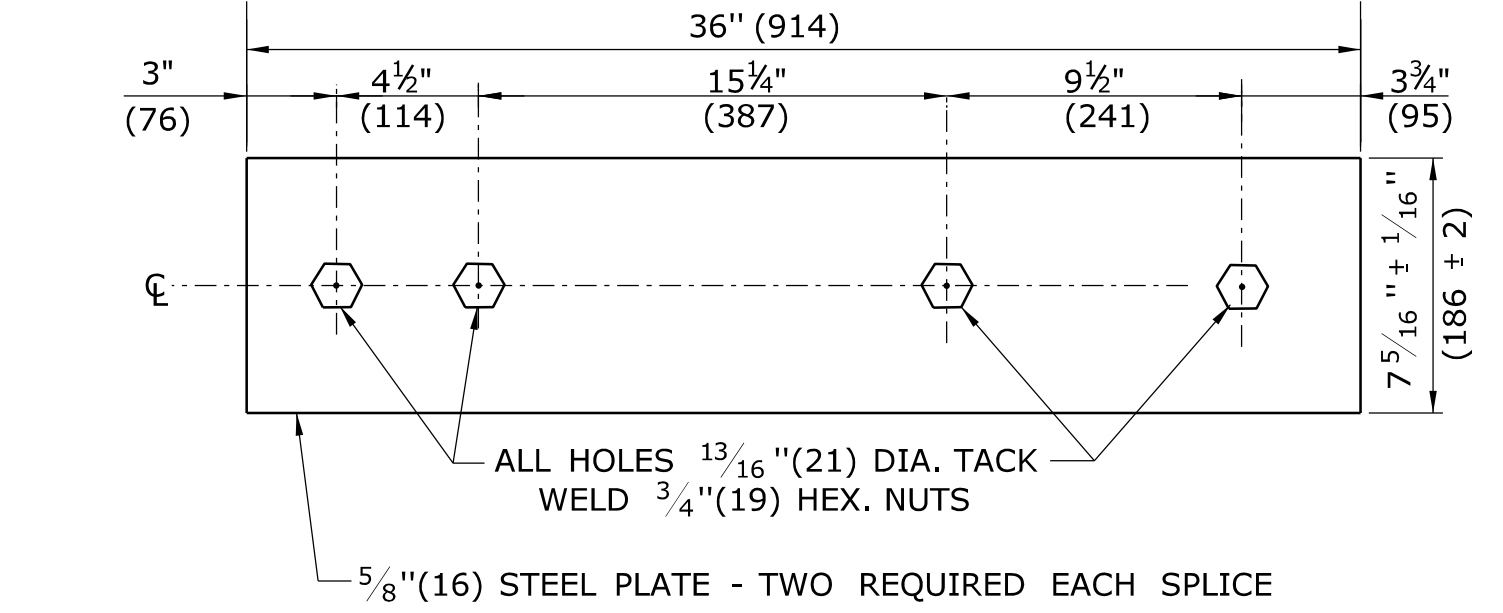
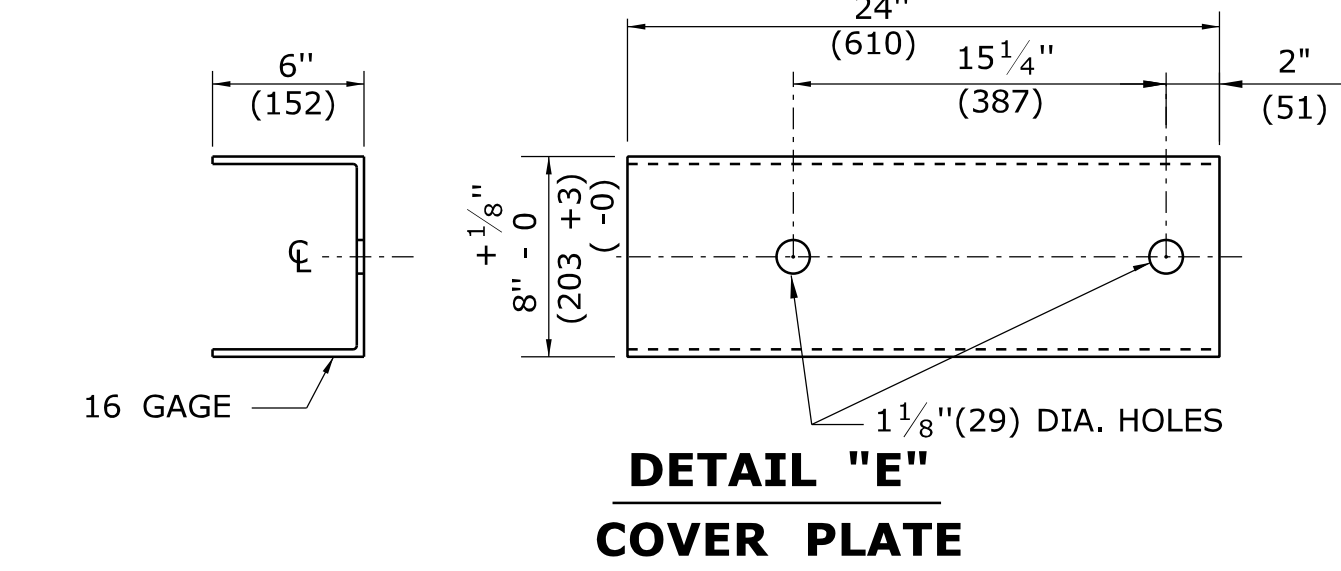
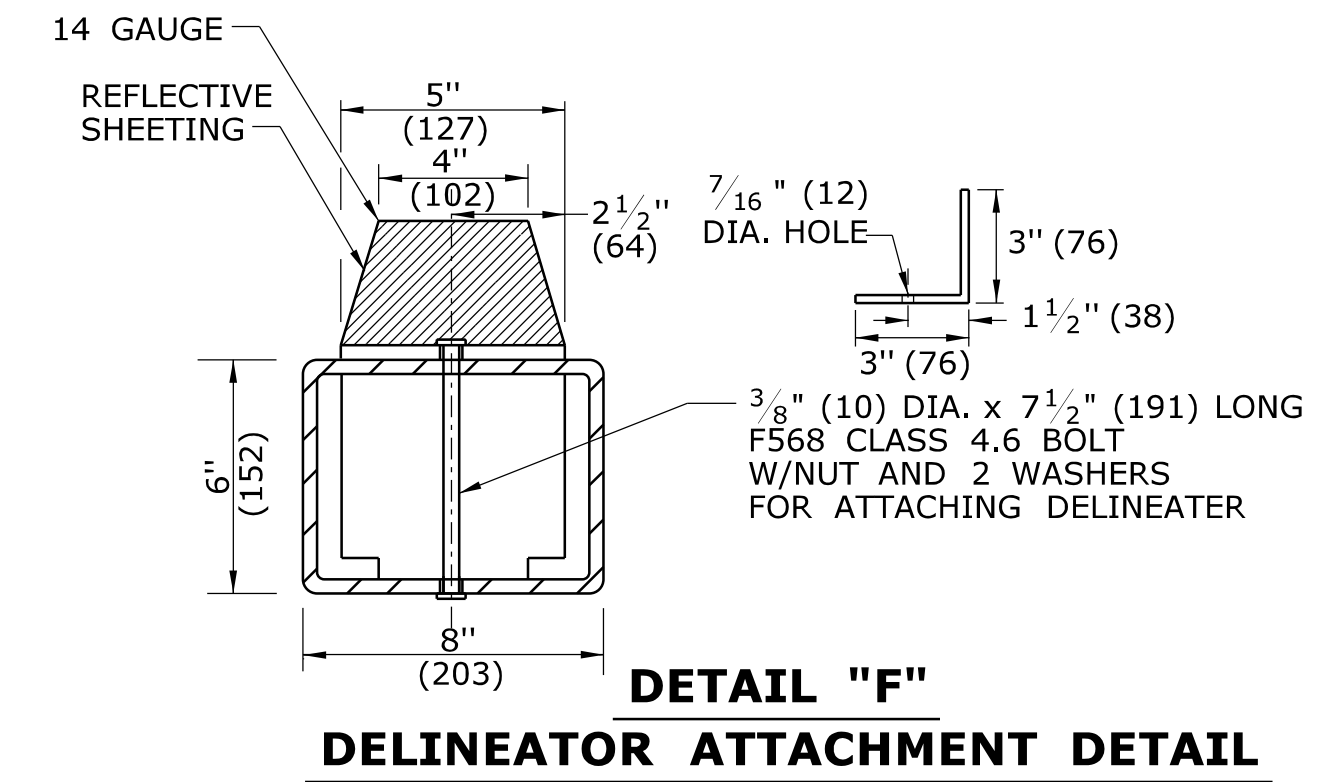
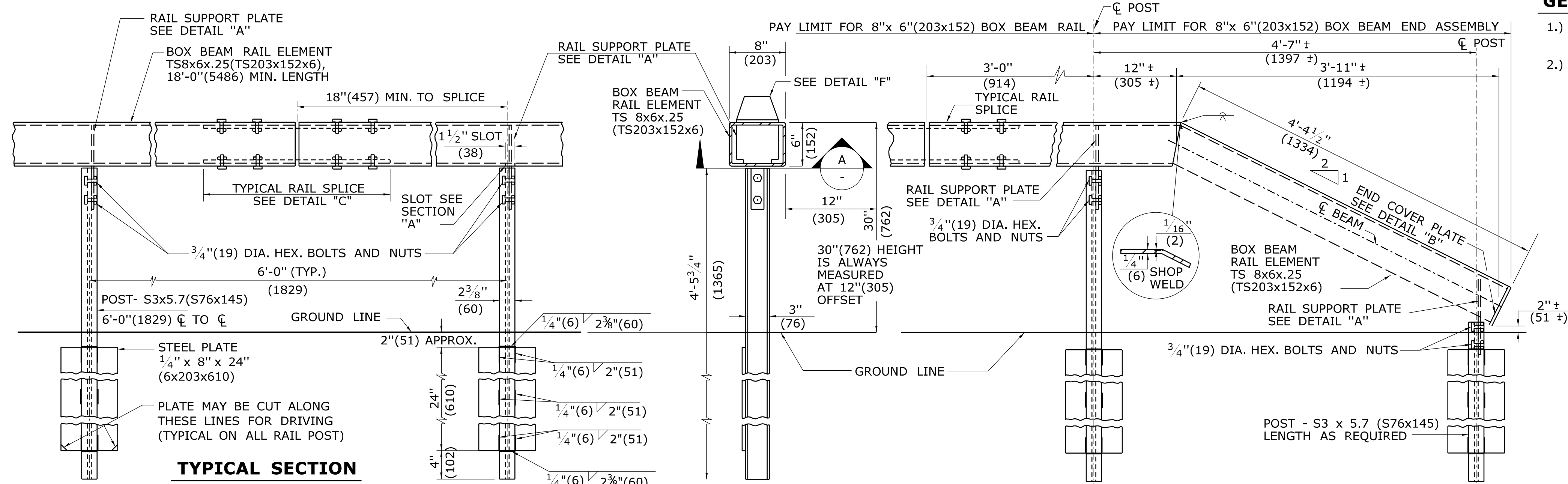


GENERAL NOTES:

- FOR CURVES WITH R < 1525' (464.8m), 8" (203) x 6" (152) BOX BEAM ELEMENT SHALL BE SHOP FABRICATED. PAYMENT FOR SHOP FABRICATION SHALL BE INCLUDED WITH THE ITEM 8" (203) x 6" (152) BOX BEAM GUIDERAIL.
- TO DEVELOP PROPER TENSION FOR DEFLECTION MIN. LENGTH = 125' (38.1m).

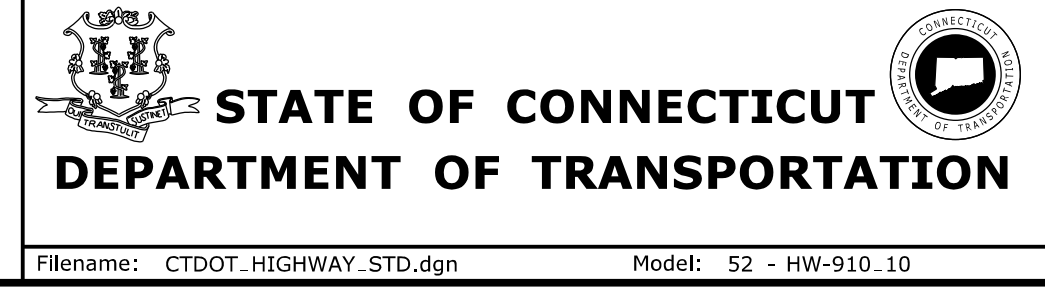


REV.	DATE	REVISION DESCRIPTION
1	7/12	ADD NOTE 2 TO GENERAL NOTES
-	-	-
-	-	-
-	-	-
-	-	-
-	-	-

THE INFORMATION, INCLUDING ESTIMATED QUANTITIES OF WORK, SHOWN ON THESE SHEETS IS BASED ON LIMITED INVESTIGATIONS BY THE STATE AND IS IN NO WAY WARRANTED TO INDICATE THE CONDITIONS OF ACTUAL QUANTITIES OF WORK WHICH WILL BE REQUIRED.

Plotted Date: 7/18/2012

NOT TO SCALE



SUBMITTED BY:	NAME/DATE/TIME:
APPROVED BY:	NAME/DATE/TIME:

CTDOT
 STANDARD SHEET
 OFFICE OF ENGINEERING

STANDARD SHEET TITLE:
METAL BEAM RAIL 8" (203) X 6" (152) BOX BEAM

STANDARD SHEET NO.:
 HW-910_10

ALL METRIC DIMENSIONS ARE IN MILLIMETERS (mm) UNLESS OTHERWISE NOTED